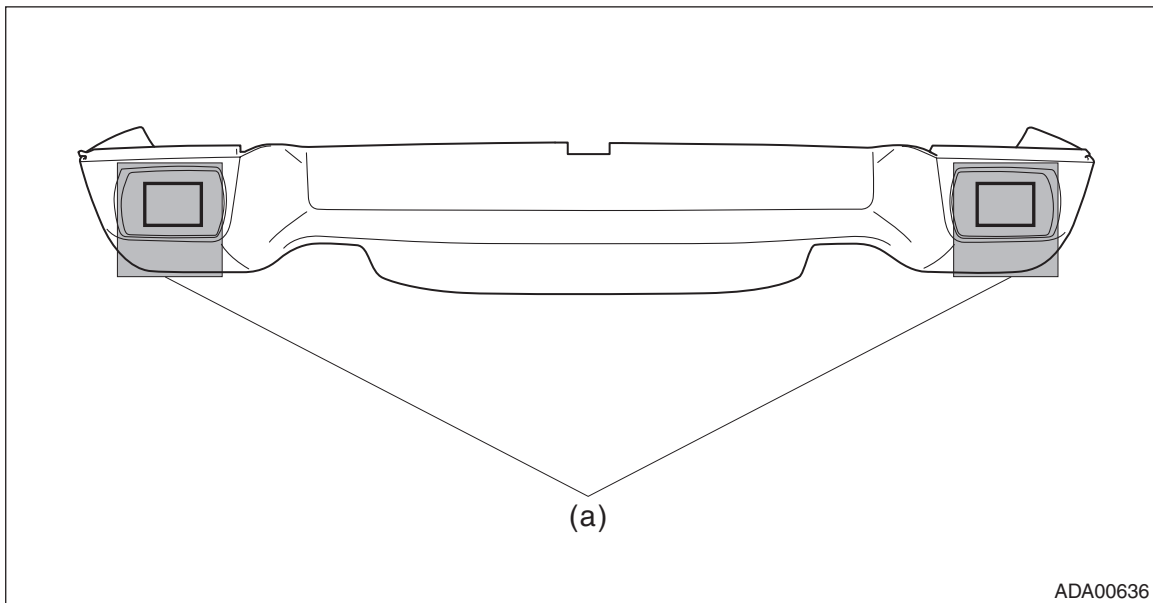


5. Stereo Camera

A: REMOVAL

CAUTION:

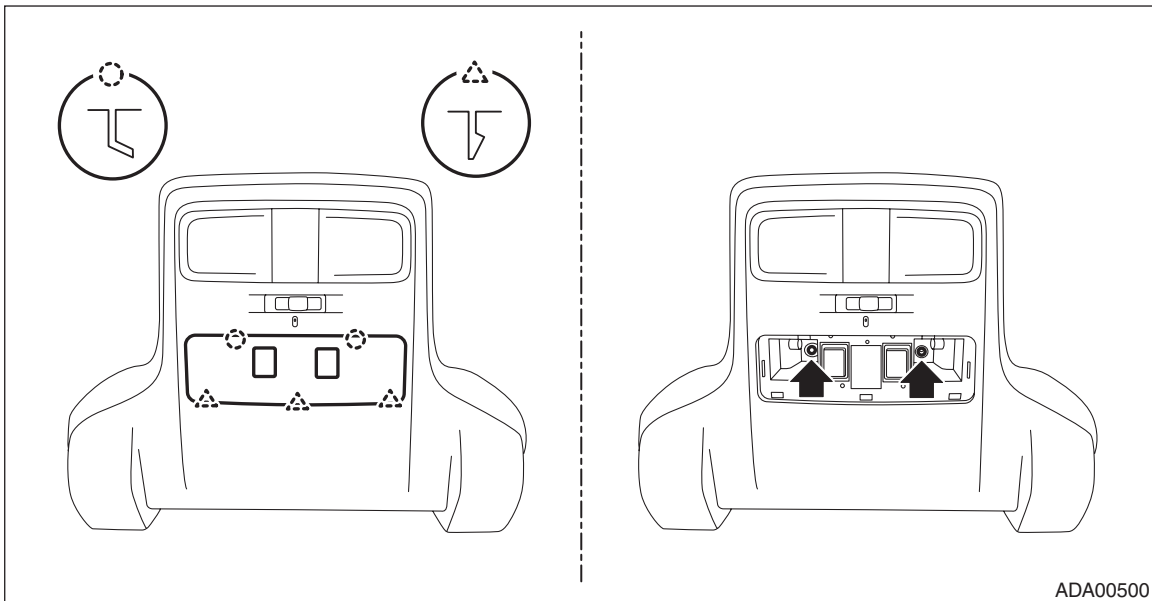
- When the stereo camera or windshield glass has been replaced, removed or installed, always perform the adjustment and inspection of the camera. (When the stereo camera has been replaced with a new part, the camera remains in a failed state until adjustment and inspection are performed.)
 - Since the stereo camera is a precision equipment, install the protective cover before handling it. (New stereo camera is equipped with a protective cover as a service part.)
 - During removal, do not hold at the left and right cameras.
 - Do not apply any impact to the stereo camera. (Even the slightest shock will deviate the optical axis of the camera, resulting in the loss of normal operation of the camera.)
 - Do not disassemble the stereo camera.
 - Attach the protective cover to the replacement part, put it into the box in the same way as the other parts and return it. Cover the replaced stereo camera with a protective cover.
 - Do not touch the lens filter on the stereo camera. If touched, replace the stereo camera.
 - When removing the stereo camera cover assembly, cover with dust-free paper such as copy paper to avoid interference with the camera lens, and attach the paper using tape while being careful not to let the adhesive surface contact the glass surface. Be sure to remove the paper after the procedure.
- 1) Disconnect the ground cable from battery.
 - 2) Attach dust-free paper (a) such as copy paper to the stereo camera cover assembly.



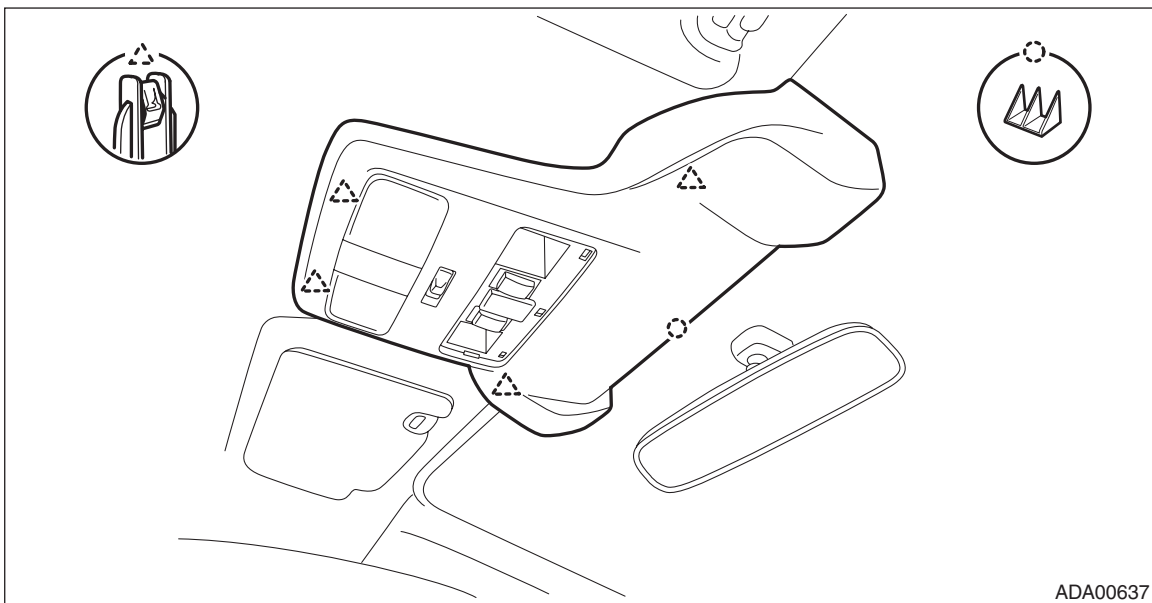
Stereo Camera

EyeSight

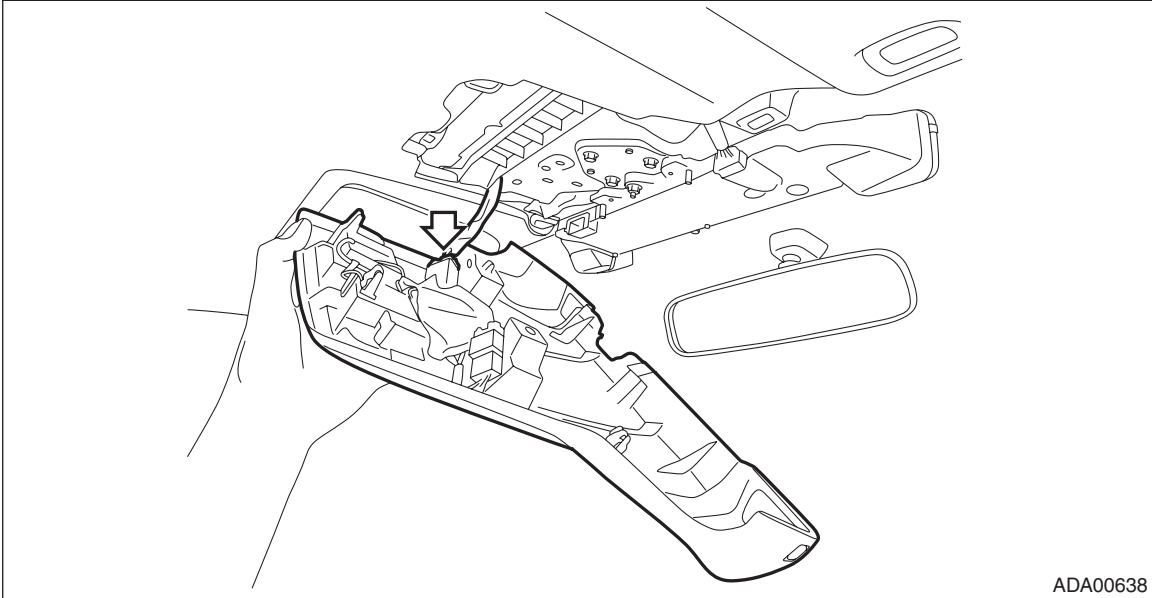
- 3) Remove the stereo camera cover assembly.
- (1) Disconnect the claws and hooks and remove the cap.
 - (2) Remove the bolt.



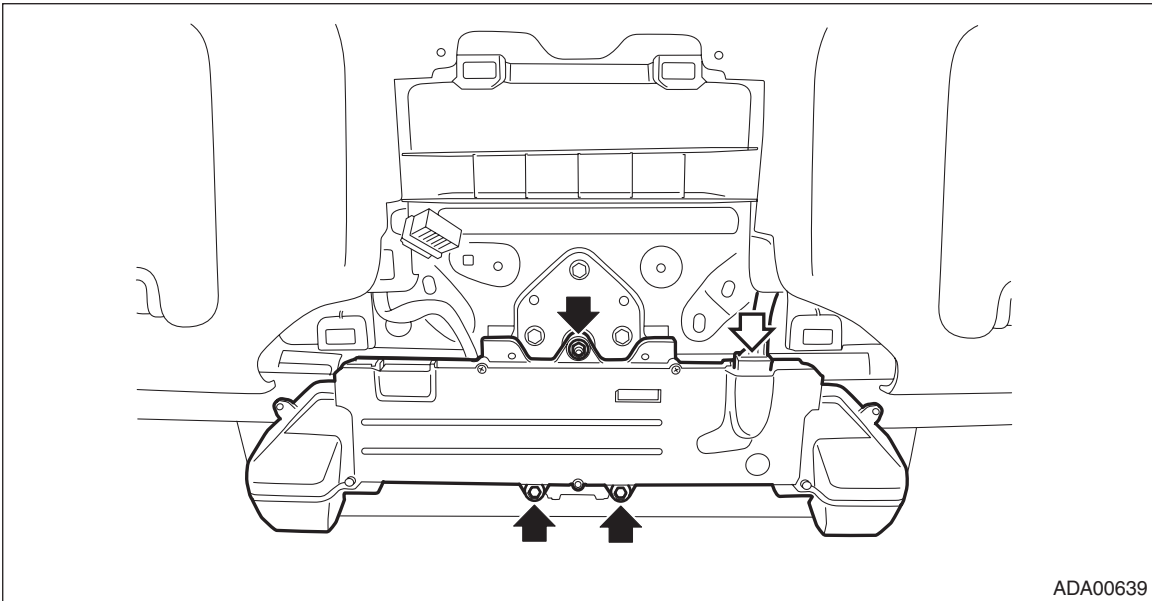
- (3) Pull down the rear of the stereo camera cover assembly, and then release the clips.
- (4) Release the hook on the front side of stereo camera cover assembly.



- (5) Disconnect the connectors, and remove the stereo camera cover assembly.



- 4) Remove the stereo camera.
(1) Disconnect the connector.
(2) Remove the nuts, and then remove the stereo camera.

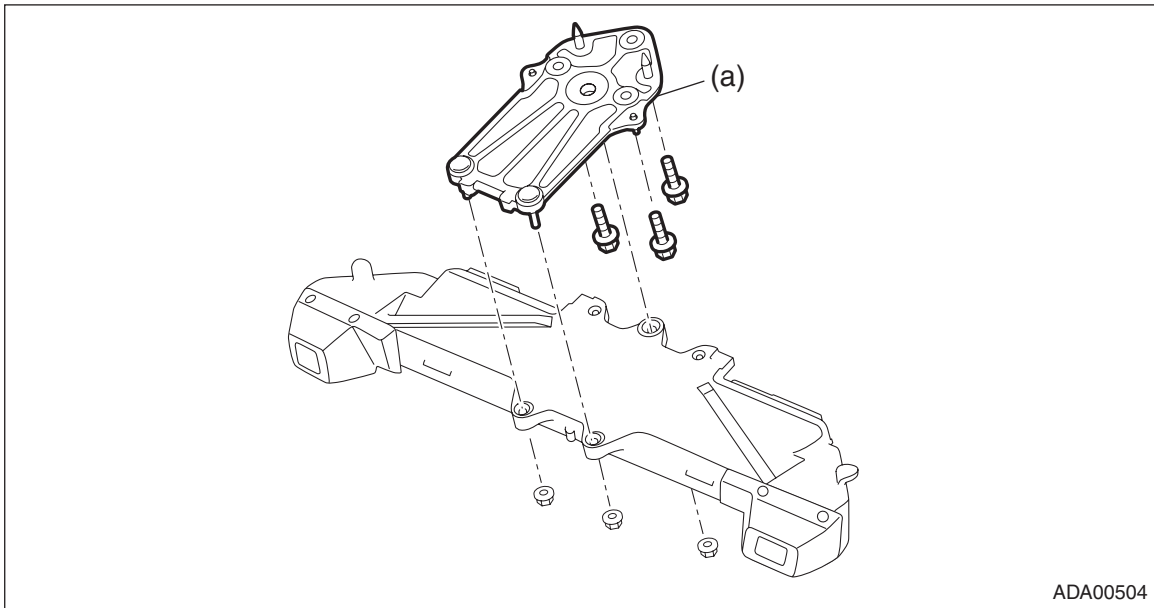


Stereo Camera

EyeSight

NOTE:

Remove the camera plate (a) as required.



B: INSTALLATION

CAUTION:

- Do not remove the protective cover until just before installing the stereo camera cover assembly. Using the bolt and nut, install the stereo camera with the protective cover attached, connect the connectors, and then remove the protective cover.
- Do not apply any impact to the stereo camera. (Even the slightest shock will deviate the optical axis of the camera, resulting in the loss of normal operation of the camera.)
- During installation, do not hold at the left and right cameras.
- Do not change the installation position of the stereo camera or do not modify the surrounding structure.
- Remove the protective cover, install the stereo camera cover assembly, and then perform adjustment and inspection of the stereo camera. <Ref. to ES-12, Camera Adjustment, Inspection.>
- Do not touch the lens filter on the stereo camera. If touched, replace the stereo camera.
- When installing the stereo camera cover assembly, cover with dust-free paper such as copy paper to avoid interference with the lens filter, and attach the paper using tape while being careful not to let the adhesive surface contact the glass surface. Be sure to remove the paper after the procedure.
- When installing the stereo camera cover assembly, take care so that the harness does not interfere with or is not caught by the stereo camera.
- Do not allow the stereo camera cover assembly to come in contact with the stereo camera. Install the stereo camera cover assembly precisely so that it will not block the visibility of the camera.
- Because the stereo camera is incompatible, be sure to check the part number before installation.

1) Attach the camera plate.

NOTE:

Align the positioning pins of camera plate to the positioning holes of front rail.

Tightening torque:

$5.5 \pm 1.0 \text{ N}\cdot\text{m}$ ($0.56 \pm 0.10 \text{ kgf}\cdot\text{m}$, $4.1 \pm 0.7 \text{ ft}\cdot\text{lb}$)

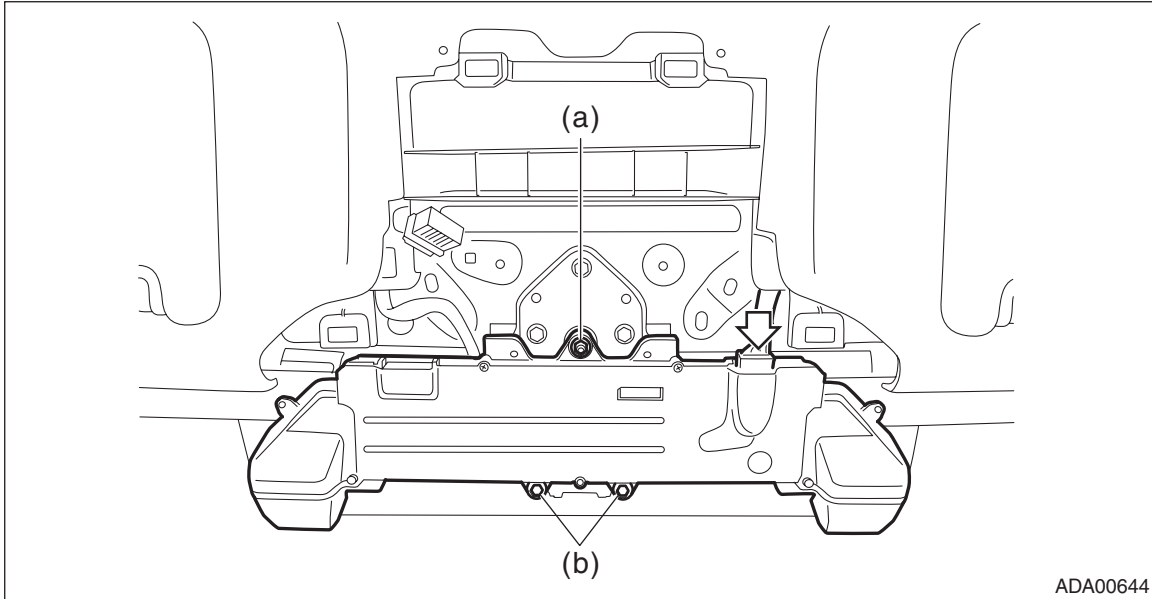
2) Install the stereo camera.

Tightening torque:

$5.5 \pm 1.0 \text{ N}\cdot\text{m}$ ($0.56 \pm 0.10 \text{ kgf}\cdot\text{m}$, $4.1 \pm 0.7 \text{ ft}\cdot\text{lb}$)

NOTE:

- Align the positioning holes of stereo camera to the positioning pins of camera plate.
- When installing the stereo camera, install the nuts (a) and (b).



3) Install the stereo camera cover assembly.

4) Connect the battery ground terminal.

5) Perform the adjustment or inspection of the stereo camera. <Ref. to ES-12, Camera Adjustment, Inspection.>

6. Camera Adjustment, Inspection

A: PROCEDURE

CAUTION:

- Perform the camera adjustment and inspection at curb weight without passengers.
- Handle RANDOM CHART (ST: 87599VA000) carefully so as not to break it with the adhesive force of the tape.

Perform inspection or adjustment according to the following procedures.

- Readjustment of stereo camera

Perform the adjustment in the following order: [1. Preparations] → [3. Camera all adjustment mode (replacement/removal)] → [4. Automatic adjustment and function check by driving].

- Replacement of stereo camera

Perform the replacement in the following order: [1. Preparations] → [2. Adjustment value clear] → [3. Camera all adjustment mode (replacement/removal)] → [4. Automatic adjustment and function check by driving].

NOTE:

When the stereo camera or windshield glass has been removed or installed, always perform readjustment of the stereo camera.

